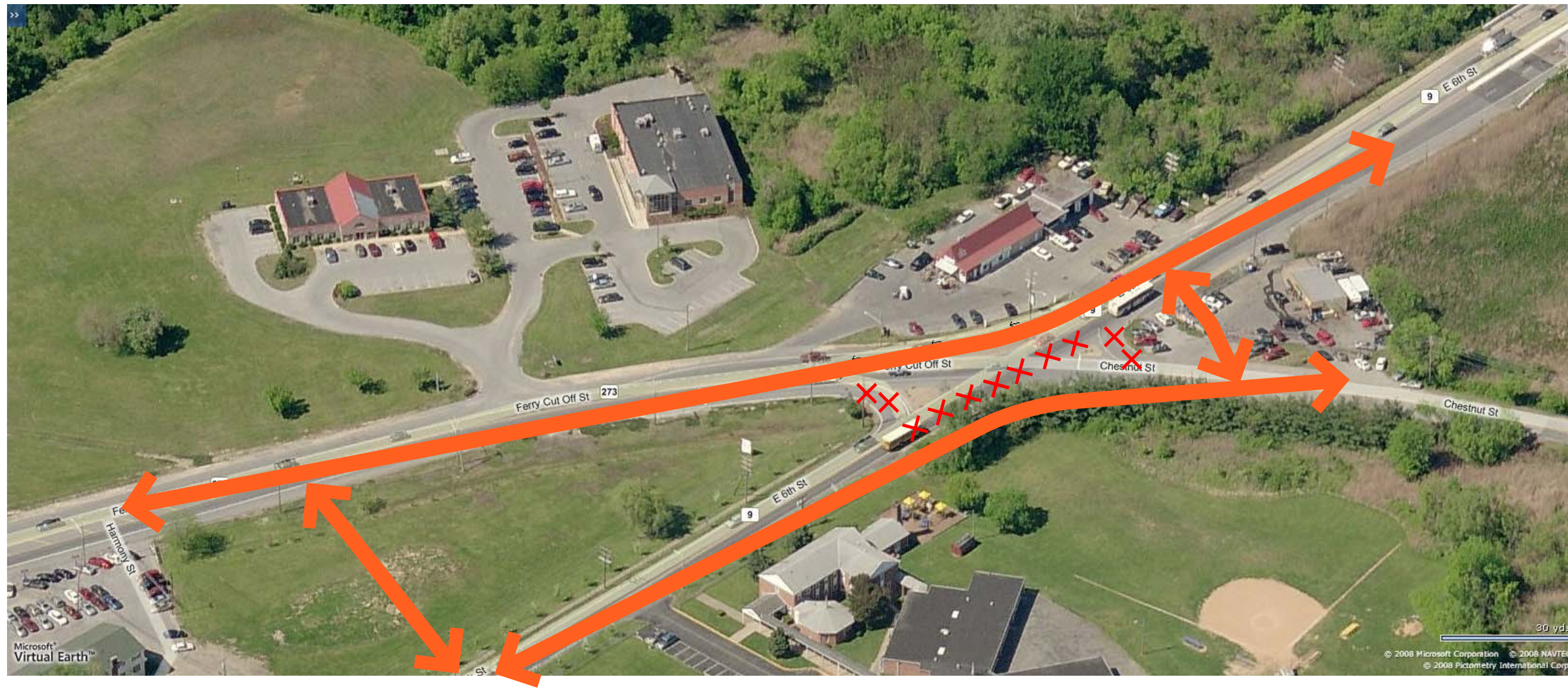


# ROUTE 9 IMPROVEMENTS

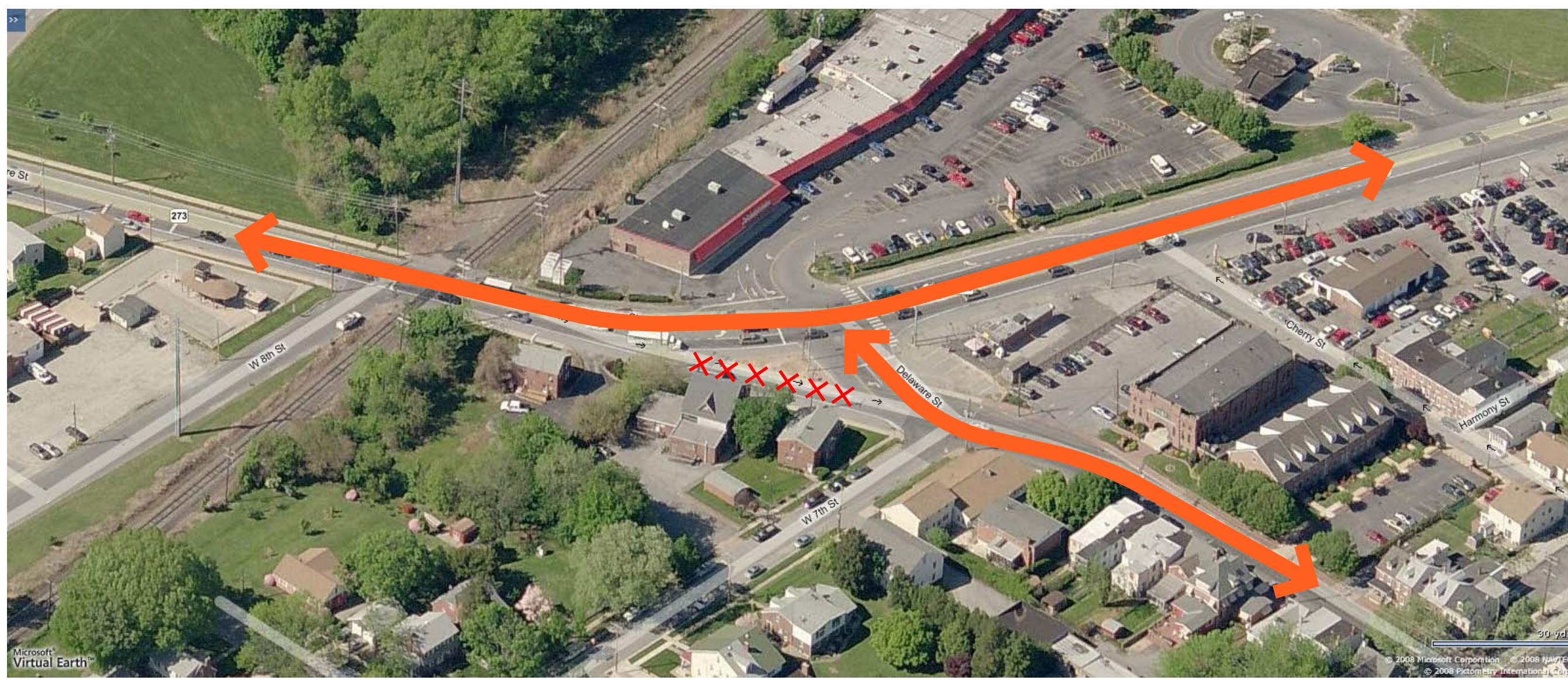
Several transportation issues and recommendations were discussed in the 2003 Comprehensive Plan based on the WILMAPCO Transportation Study of New Castle. The recommendations focused on geometric changes to intersections to deflect Route 9 thru-traffic around downtown, instead of cutting through downtown.



**Do you support an investment reconfiguring the intersection of 6th and Route 9?**

Yes

No



**Do you support an investment reconfiguring the intersection of Delaware St. and Route 9?**

Yes

No



**Do you support an investment reconfiguring the intersection of Washington and Route 9?**

Yes

No